

# Neuro Solutions



# A Complete Line Of Lorenz® Plating Options.



## Innovative Products For Neurosurgery

Anticipation and innovation. These two qualities have made Biomet Microfixation an industry leader. Founded by Walter Lorenz more than thirty years ago, Biomet Microfixation offers instrumentation, plating systems and related products for a wide range of surgical procedures.

Biomet Microfixation is proud to offer a complete range of innovative products to meet the needs of neurosurgeons for a wide range of procedures. This brochure provides a brief description of the wide range of neurosurgery options offered. To receive complete information on how these products can benefit you, please contact us or visit [www.biometmicrofixation.com](http://www.biometmicrofixation.com)

## 1.5 Neuro System

The 1.5 Neuro System offers a fully customizable tray that can accommodate a large selection of titanium plates, screws and meshes. The removable screw dial provides housing for the 1.5 precision-engineered, self-drilling high torque screws (Ti 6AL-4V). Additional drop-in trays offer added storage for the RapidFire® screw delivery system and unique plate designs.

## ThinFlap™ Neuro Plating System

- Industry-leading .3mm profile
- Minimal or no plate palpitation
- Offered in conventional storage tray or in SterileTrac delivery system



## SterileTrac™

SterileTrac offers a wide range of advantages including improved lot traceability, accurate cost capturing and a variety of plate selections optimal for any cranial-flap closure. SterileTrac is available for both 1.5 Neuro plating and the ThinFlap system. In addition a SterileTrac instrumentation tray is available, providing a convenient, space saving storage solution for screwdriver handles, forceps, plate cutters, drills and blades.



## Power Driver™

- Two forward and reverse speeds
- Sterile, disposable batteries
- Fast screw insertion
- Can be used with single HT blade or RapidFire cartridge for a fully automatic delivery system



## RapidFire® Screw Delivery System

- Sterile screw delivery
- Factory-loaded retention
- Significant time savings
- Combines with Biomet Microfixation Power Driver



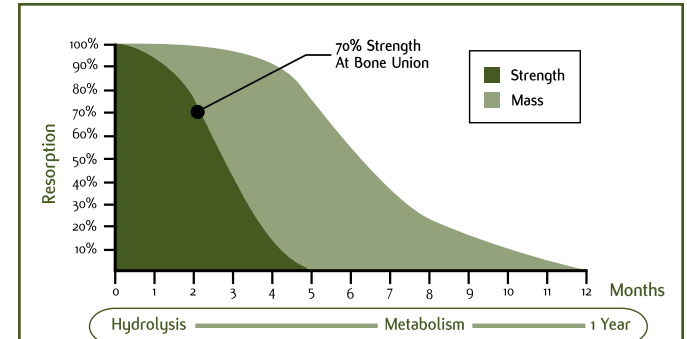
**BIOMET®**  
MICROFIXATION  
Anticipate. Innovate.™

# New Products And The Ones You've Trusted For Years.

## LactoSorb® SE Resorbable Fixation System

A Leader In Resorbable Technology

- More than 50,000 cases since 1996
- Optimal resorption profile for pediatric patients (82% Poly-L-Lactic Acid and 18% Poly-Glycolic Acid)
- Full line of 1.5 and 2.0mm plates and screws
- LactoSorb resorbs and is eliminated from the body in approximately one year



This graph shows that at the time of bone union, typically eight weeks, LactoSorb plating still retains seventy percent of its initial strength.

## RapidFlap™ LS

Resorbable Cranial Flap Fixation

- Made of clinically proven LactoSorb material
- Quick and easy to use, which can reduce costs by shortening O.R. time
- Pre-attached applicator eliminates the instrumentation required for fixation
- Material is designed to reduce bone growth restriction, transcranial migration, implant palpability and temperature sensitivity



## RapidFlap™ SpinDown

Cranial Flap Fixation

- No instruments needed for implantation
- Provides maximum cranial flap fixation, reducing potential for flap depression or protrusion
- Smaller craniotomy line clamp and larger burr hole clamp are available for a variety of flap fixation needs
- Inner clamp plate engineered without teeth for atraumatic closure



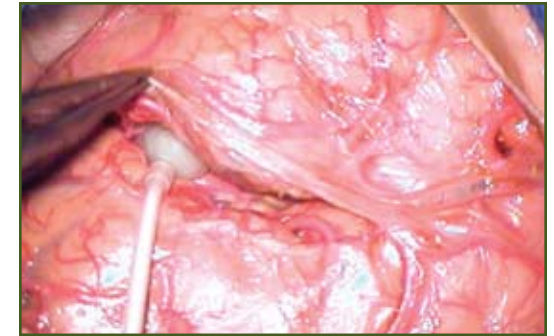
## Introducing KIND™

Biomet Microfixation is proud to introduce the KIND Neuro Balloon Retractor, designed to offer neurosurgeons a wide range of unique advantages in elevating, retracting and/or holding neural tissues.

- May improve access to pathologies with minimal disruption of the brain tissue
- Designed to eliminate adhesion to tissue through its nonstick, silicone surface
- May decrease entry and exit movements reducing the chance of injury to the brain
- Aids in atraumatic exposure of the sylvian fissure
- Inflate-deflate-and-move step may help prevent damage to the brain from prolonged and constant retraction
- Positioned behind vessels enhances exposure of perforators, potentially avoiding their injury
- Provided as a single-use, sterile silicone balloon catheter
- Available in four sizes for optimal retraction and visibility

## Indications

- Transylvian fissure approaches
- Interhemispheric approaches



**BIOMET®**  
MICROFIXATION  
Anticipate. Innovate.™

# Providing Innovative Products For Neurosurgery Needs.

## HTR® Patient Matched Implant

- A market leader in CT-based custom implants since 1993
- More than 4,500 cases to date
- Ultra-Porous beads of PMMA (Polymethylmethacrylate) and PHEMA (Polyhydroxyethylmethacrylate)
- Radiopacity for post-operative monitoring
- Two sterile implants shipped for each case for added safety and security



## Mimix® & Mimix® QS

- Hydroxyapatite (HA) based mixture of tetracalcium phosphate and alpha (α)-tricalcium phosphate powder with a citric acid solution
- Non-shrinking radiopaque material that sets at isothermal temperature that will not damage surrounding tissue
- Can be placed directly on the dura



### Mixing Properties

	Mimix	Mimix QS
<b>Rapid Mixing:</b>	30-45 sec	30-45 sec mix, 30 sec wait
<b>Working Time:</b>	2-4 min	1-2 min
<b>Setting Time:</b>	3-4 min	1-2 min
<b>Hardening Time:</b>	4-6 min @ 37°C	5 min @ 37°C
<b>Compression Strength:</b>	3,300 psi @ 37°C	3,250 psi @ 37°C
<b>Sizes:</b>	5, 10, 25 grams	5, 10 grams

Times are approximate and determined by simulated clinical use

## Allogenix™

Demineralized Bone Matrix

- Easy to use: Requires no mixing, warming or special storage
- Osteoinductive: Every lot is bioassayed to demonstrate its osteoinductivity
- Safe: Manufactured using strict screening standards, no donor pooling and aseptic processing with viral inactivation
- Insoluble: Designed to maintain shape and consistency in a wet environment; over time, tissue ingrowth can occur and the carrier will be absorbed and dispersed naturally

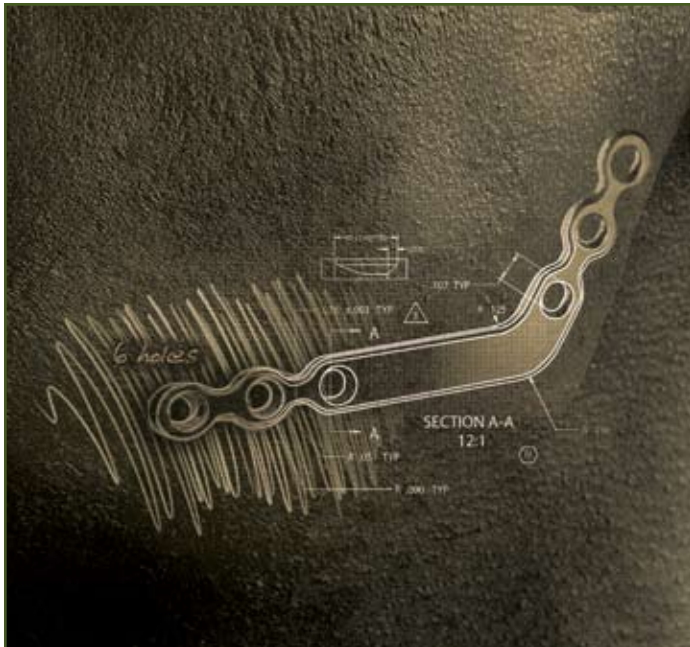


## Rapid Response Program

### Pursuing innovation, one surgeon at a time.

The Rapid Response Program combines a dedicated team of Rapid Response engineers with rapid prototyping and manufacturing capabilities to address individual surgeons' needs. Advantages include:

- Capability to design and modify instrumentation, plating, screws, blades, trays and other requests
- Ability to work with metals and resorbable polymers for implants
- Average project turnaround in two weeks or less
- Modeling capability for patient-matched implants



## Unique Skull Base Plating Options

### Posterior Fossa Plates



Round, .5mm thick  
75mm Diameter  
SP-1767

### Translabyrinthine Plates



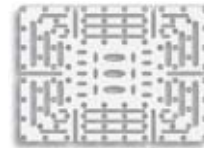
Small, .3mm thick  
51.7mm x 39.9mm  
SP-1836

Small, .6mm thick  
51.7mm x 39.9mm  
SP-1796

### Retrosigmoid Plates



Small, .3mm thick  
44.7mm x 36.9mm  
SP-1842



Rectangle, .5mm thick  
88.9mm x 63.5mm  
SP-1768



Large, .3mm thick  
58.5mm x 45.39mm  
SP-1837

Large, .6mm thick  
58.5mm x 45.39mm  
SP-1797



Large, .3mm thick  
54.1mm x 44.5mm  
SP-1798

What fascinates you about the body is also what drives us. That's why we're always pushing the boundaries of engineering to make products that help you keep the human form as glorious as it was intended. To learn more about our breadth of products, call 800-874-7711 or visit us online at [biometmicrofixation.com](http://biometmicrofixation.com). We'd love to join you in a conversation about the future.

**BIOMET®**  
**MICROFIXATION**  
**Anticipate. Innovate.™**

For more information on our Neuro products, please contact us at:

**GLOBAL HEADQUARTERS**

1520 Tradeport Drive • Jacksonville, FL 32218-2480  
Tel (904) 741-4400 • Toll-Free (800) 874-7711 • Fax (904) 741-4500 • Order Fax (904) 741-3059  
[www.biometmicrofixation.com](http://www.biometmicrofixation.com)

**EUROPE**

Toermalijnring 600 • 3316 LC Dordrecht • The Netherlands  
Tel +31 78 629 29 10 • Fax 31 78 629 29 12  
e-mail: [europa@biomet.com](mailto:europa@biomet.com)

As the manufacturer of this device, Biomet Microfixation does not practice medicine and does not recommend this product or surgical technique for use on a specific patient. The surgeon who performs any implant procedure must determine the appropriate device and surgical procedure for each individual patient. Devices shown in this brochure may not be cleared or licensed for use or sale in your individual country. Please contact your local distributor for information regarding availability of this product. Information contained in this brochure is intended for surgeon or distributor information only and is not intended for patient distribution. All surgeries carry risks. For additional information, please see package insert, or visit our web site at [www.biometmicrofixation.com](http://www.biometmicrofixation.com) or call 1-800-874-7711.

All trademarks are the property of Biomet or its subsidiaries unless otherwise noted. HTR® is a registered trademark of U.S. Surgical Corp.